

The Airtec Advantage

Field trials conducted by NDSM

Independent Trials specialists have demonstrated that Airtec operating at 70 litres/ha with chemical rates reduced by 40% gave better disease control in Winter Wheat and a

consequential yield increase of 2.1 tonnes/ha when compared to a conventional sprayer operated at 200 litre/ha.

This equates to an additional Net margin per hectare of £139.00.

The Airtec system provided better disease control on lower leaves, as the spray penetrated further down into the crop. This gave less potential for spores to splash up onto newly emerging leaves as the crop developed owing to a lower inoculum pressure.

Airtec[®] Explained

The Airtec Sprayer uses specially developed nozzles to combine air & agrochemical into droplets which behave in a completely different way from conventionally produced sprays, Droplets produced in this way require far less water than solid water droplets which means using application rates of typically 75 litres/ha as opposed to 200 litres/ ha with conventional systems. Less water means greater coverage per tank, less re-filling and higher outputs.

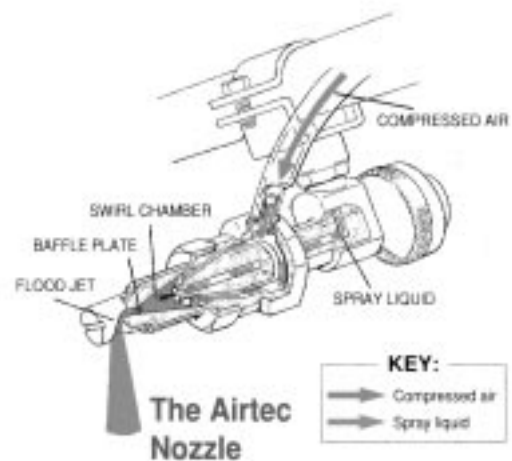
Each Airtec droplet contains tiny air bubbles which burst on impact to improve deposition and independent work has

“Airtec users typically spray at 75 litres/ha as opposed to a Conventional system at 200 litres/

shown retention of chemical to be far superior with Airtec.

Droplets are entrained into the crop in a curtain of air which helps the Airtec sprayer cut drift to just 10% of that from conventional sprayers in certain conditions. Producers spraying with Airtec enjoy a far wider application window than their conventionally-equipped counterparts.

And with Airtec & the Magic Box you can adjust water & air pressure on the move to produce exactly the right droplet spectrum for varying weather & crop conditions.

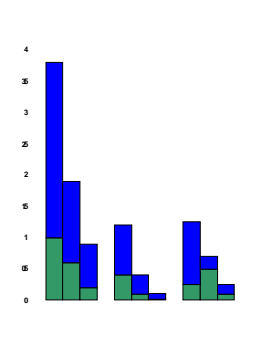


The Airtec Nozzle



The Airtec nozzle has a simple positive fitting that gives accurate nozzle alignment. The new easy fit 3 ISO standard nozzle incorporates a bayonet type fitting which permits quicker & easier fitting to all leading makes of sprayer. New plastic restrictors are colour coded for volume in accordance with ISO industry standard - green 35 (50 - 120 litre/ha) blue 40 (60 - 160 litre/ha) & yellow 50 (90 - 250 litre/ha) - and incorporate self alignment lugs for correct foolproof positioning to ensure accurate spraying.

**AIRTEC REDUCES
DRIFT**

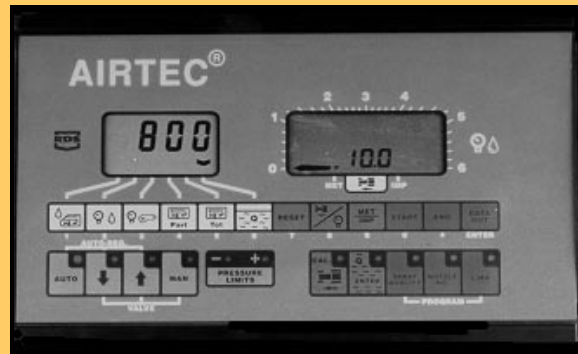


Drift studies carried out at the International Centre for the application of pesticides have shown that spray drift from the Airtec Nozzle is reduced by between three to ten times than conventional nozzles operating at the same spray quality. The graph above shows how dramatic these drift reductions are, Conventional Nozzles in Blue & Airtec Nozzles in Green. This means that you have a far wider and more effective spraying window with Airtec, and you will still be spraying efficiently when

The Magic Box Airtec Controller

The Magic Box control system developed especially for the Airtec sprayer adds a further dimension to application efficiency by maintaining spray quality as well as application rate. The system controls the pressure of both liquid and air used in the formation of droplets to hold both application rate & spray quality constant regardless of forward speed - an impossible task in conventional setups.

In addition, the system will allow Airtec operators to “change nozzles on the move if desired - simply by pressing a button to draw on pre-set combinations of air and liquid pressures matching required spray qualities.



The Magic Box will increase application efficiency, improve farm safety and make life easier for sprayer operators.

The Magic Box improves agrochemical utilisation by making sure the optimum spray quality for best results is maintained at all times.

As there is no need to change nozzles operators also save time and face less exposure to potentially dangerous chemicals.

This system not only reduces time input necessary with manual systems, it also helps to improve recording accuracy. This eliminates the need for taking detailed notes when field applications are being made, and then transferring them to central records when time permits.

With the Magic Box relevant details can be entered into the instrument in the field and then directly transferred to the farm computer running a crop management program.

Other details such as type of product, quantities, tank mixes, can also be entered before the computer converts all the data into a comprehensive record of in field activity.

As well as reducing the opportunities for mistakes to be made, the data transfer facility also saves time duplicating hand written notes when there is in field work to be done. The Magic Box is also precision farming compatible,

Airtec Shows The Way In Trials

In a difficult year the only significant yield responses were on Airtec plots showing that even though the crops were highly stressed and carrying very little disease, carefully planned inputs through the Airtec system were justified.

